

MTX-Router-EOS

LTE/4G, dual SIM & 3x Ethernet compact industrial IoT router

The MTX-Router-EOS is an entry level router developed for industrial applications. It has a very compact design with a very rugged enclosure and accessories to be mounted on a wall mount. It features dual SIM, 3x Ethernet, VPN client and 3 antennas included (another one for GPS optional).

The MTX-Router-EOS can be used in many different IoT applications like kiosk, telemetry, remote sensing, smart grid, security, industrial automation, etc.



Main Features



4G



Dual SIM



WiFi



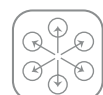
3x Ethernet



RS232
RS485



DIN rail



Modbus



VPN



DHCP



Firewall



Serial
tunnelling



DynDNS



Programmable
autoreset



MQTT



SMS
control

Strenghts & Benefits

- Entry level router.
- With dual SIM.
- It has 3x Ethernet ports.
- 3x antennas included, and another one for GPS optional.
- Remote management vía MQTT, SMS or web server.
- DIN rail.

Applications

- For industrial IoT applications like kiosk, telemetry, remote sensing, smart grid, security, industrial automation, etc.

Specifications

Router-EOS 4G

LTE 700, 800, 900, 1800, 2600MHz; UMTS/HSPA+ 900, 2100MHz

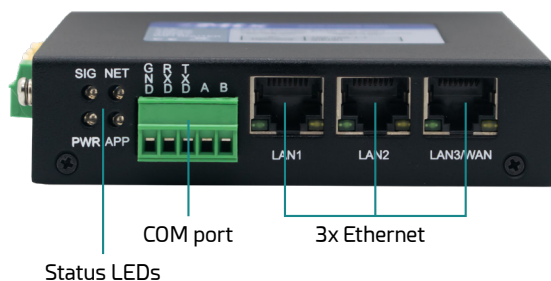
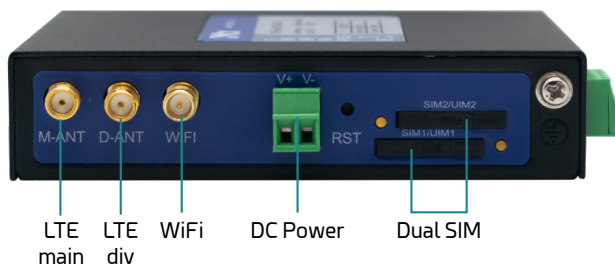
LTE Cat.4 FDD: B1, B3, B7, B8, B20, B28A: DL 150Mbps, UL 50Mbps; MIMO

HSPA (3GPP release 6, 7) B1, B8: DL 7.2Mbps, UL 5.7Mbps; HSDPA Cat.8/HSUPA Cat.6 data rates

GPRS B3, B8: Class 12; mobile station class B; PBCCH support; coding schemes CS 1-4

Interfaces

- 4G/3G/2G connectivity
- 3x Ethernet 10/100 BaseT
- 1x COM (RS232 or RS485)
- WiFi 802.11 b/g/n
- GPS (optional)



Connectors

- 2x SMA F antenna connectors: LTE
- 1x SMA F RP antenna connector: WiFi
- 1x SMA F antenna connectors: GPS (optional)
- 3x RJ45: Ethernet 10/100 BaseT
- 1x terminal block: RS232/485
- Dual SIM card
- DC power terminal block: power input

Characteristics

- Status LEDs
- DIN rail
- DC input: 5-35 Vdc Phoenix type
- Temperature range: -35 - 75°C
- Dimensions: 115x97x24mm
- Weight: 390gr.
- Certifications: CE, FCC, RoHS, ISO9001

Software Features

- DHCP server
- NAT/IP firewall
- Serial tunnelling
- Multiple DDNS provider supported
- Automatic data sending (MQTT)
- Schedule reboot, schedule online and off-line
- SMS control
- Remote management (web, SSH, Telnet)
- Remote firmware upgrade

Packing List Included

- DIN rail and wallmount kits
- Ethernet cable
- WiFi antennas
- LTE antennas

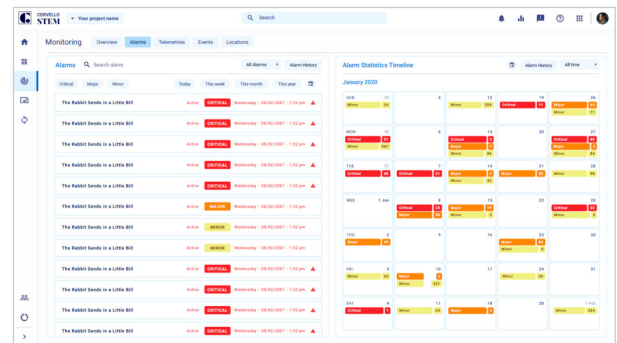
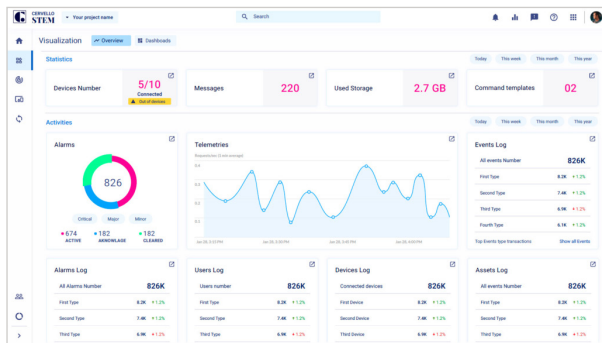
References

PRODUCTS

- MTX-Router-EOS 4G WiFi

000502300047

Cervello Stem - IoT Platform



GENERAL FEATURES

- Up to unlimited devices
- Autoprovisioning
- Real time dashboards
- Remote control
- Monitoring engine
- Alarms and alerts
- Rules engine
- Remote update
- Connect engine*
- API Keys*
- Analytics*
- Multi-tenant*
- White labeling*
- Custom admin role*

MONITOR

- Alarms, Events and Incidents
- Tracking*

CONTROL

- Command template
- OTA

DEVICES INVENTORY

- Add single from template
- Add Bulk from template and from autoprovisioning
- Manage: Device template, Groups, Assets and Bulk actions

CONNECT

- Topics*
- Transformation*
- Integration keys*

VISUALIZE

- Dashboards
- Reports

AUTOMATE

- Rules Engine
- Actions
- Triggers

SECURITY

- 2-factor authentication
- SSL for end user application
- Custom admin roles*

*Upgrade required

**Available with compatible devices with MTX-Tunnel or MTX-Titan

The equipment may vary from the description in this document. Webdyn reserves the right to make changes to the product(s) and or information contained herein without notice. This document may not be considered as a contract specification.