


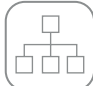














MTX-Router-Titan mini

LTE/4G/3G/GSM/GPRS compact industrial IoT router

The MTX-Router-Titan mini is an innovative industrial router. By providing an easy integration and powerful interfaces, it avoids further hardware components. Some of its interfaces are: Ethernet, WiFi, USB, RS232, 1-Wire, GPIOs and a relay. A 4G (LTE Cat.3) modem is attached internally. The MTX-Router-Titan mini includes: DHCP server, NAT, WiFi Access Point, CSD call manager, 3G to RS232/USB gateways, external sensor dataloggers (temperature, distance, Modbus RTUs), DynDNS/NoIP client, relay control, GSM cell positioning, remote firmware upgrade, among others.



Main Features

 4G/3G/2G	 Ethernet	 RS232 RS485	 WiFi	 Relay	 GPS (optional)	 Accelerometer	 Cervello Stem
 Webserver	 Serial gateway	 Datalogger	 Modbus	 DynDNS No-IP	 MQTT	 SMS control	 VPN management

■ HARDWARE ■ SOFTWARE

Strenghts & Benefits

- A complete set of wired and wireless interfaces.
- It doesn't need further hardware components.
- Like all MTX-Titan routers, it has all the functionalities of MTX-Titan software, and the Cervello Stem IoT platform.

Applications

- It can be used in an infinite IoT applications.

Specifications

Titan mini 4G	Titan mini 3G
Penta-Band LTE: Bands 1, 3, 8, 20, 28 (700, 800, 900, 1800, 2100 MHz) Dual-Band UMTS/HSPA+: Bands 8, 1 (900, 2100 MHz) Dual-Band GSM: 900 and 1800 MHz	Five Bands UMTS (WCDMA/FDD) Bands: 800, 850, 900, 1900 and 2100 MHz Quad-Band GSM Bands: 850, 900, 1800 and 1900 MHz
LTE Cat. 1 DL: max. 10.2 Mbps, UL: max. 5.2 Mbps	
HSPA+ Cat.8 data rates DL: max. 7.2 Mbps, UL: max. 5.76 Mbps	HSDPA Cat.8/HSUPA Cat.6 data rates DL: max. 7.2 Mbps, UL: max. 5.76 Mbps
GPRS Class 12 DL: max. 85.6 kbps, UL: max. 85.6 kbps	EDGE Class 12 data rates DL: max. 237 kbps, UL: max. 237 kbps GPRS Class 12 data rates DL: max. 85.6 kbps, UL: max. 85.6 kbps
	CSD data transmission up to 9.6 kbps, V.110, non-transparent
SMS text and PDU mode support	SMS text and PDU mode support

Interfaces

- 4G/3G/2G connectivity
- Ethernet 10/100 BaseT
- Up to 3x RS232
- WiFi b/g/n
- 1x RS485
- 1x relay
- 1x 1Wire
- 1x GPIO
- Accelerometer
- DIP switch for configuration
- Temperature sensor
- RF expansion (optional)
- GPS (optional)

Connectors

- 1x SMA F: GPS/1x SMA F RP: WiFi
- 1x SMA F: 4G/1x FME M: 3G
- Micro USB connector AB Type
- Terminal block: power supply
- 1x RJ45: Ethernet 10/100 BaseT
- 1x DB15: RS485, 2x RS232, 1x relay, 1x CAN, 1x GPIO
- Micro SIM



Characteristics

- DC: 24V (7-50 Vdc)
- Temperature range: -40 - 85°C
- Dimensions: 78.1x66.8x37.2mm
- Weight: <500gr.
- Certifications: CE, FCC, PTCRB, RoHS, ISO9001

References

PRODUCTS

- | | |
|---|---------------------|
| ■ MTX-Router-Titan mini (only ETH+WiFi) | 000199802134 |
| ■ MTX-Router-Titan mini-3G | 000199802118 |
| ■ MTX-Router-Titan mini-3G-GPS | 000199802140 |
| ■ MTX-Router-Titan mini-4G-GPS | 000199802142 |
| ■ MTX-Router-Titan mini-4G-GPS US | 000199802172 |

MTX-Titan Software Features

SERIAL GATEWAYS

- 3 simultaneous 2G/3G/4G/Eth/WiFi <-> RS232/485/USB gateways
- Modes: TCP server/TCP client
- SSH encryption enabled, supports TACACS+
- Incoming CSD call for metering applications

MODBUS

- Modbus TCP/Modbus RTU gateway
- Modbus TCP/RTU to SNMP gateway (SNMP connectivity for any modbus device)
- Modbus slave RTU/TCP (send/receive SMS, Email, SNMP traps...)
- User scripts

DATALOGGER

- Data from sensors (temperature, distance...)
- Serial data collected by RS232, RS485 or USB
- GPS data for tracking applications or fleet management
- Automatic data sending (HTTP/HTTPS/FTP/MQTT) with JSON format

SENSOR COMPATIBLE

- Temperature sensor MTX-Temp-RS232
- Distance sensors (ultrasound) Maxbotics
- Modbus RTU/TCP sensors
- Internal jamming detection sensor with alarm indicator

SMS

- Full control by SMS with phone number authorizations
- Alarms (digital input, temp., MBus data read)
- Send/receive SMS by Modbus TCP (for PLC)

OTHER

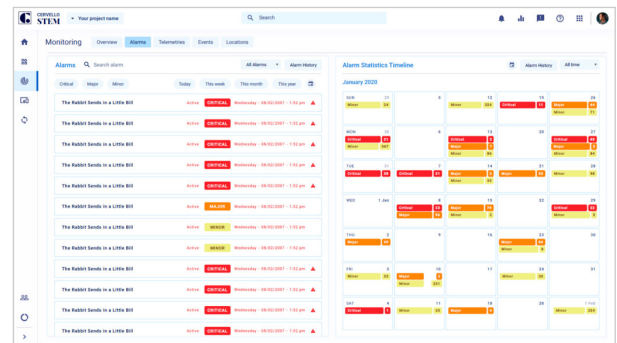
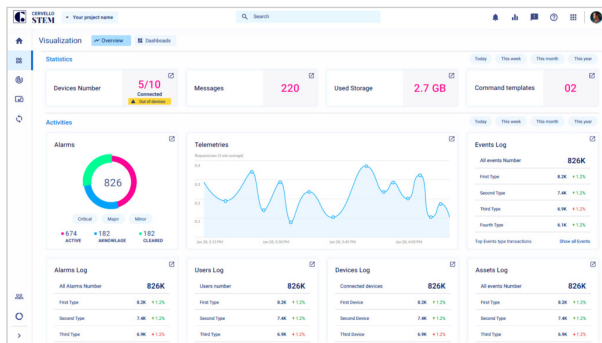
- Compatible with DynDNS/No-IP & private DNS
- GSM cell location
- Programmable autoreset (schedule, timer...)
- Multioperator SIM utilities (integrated rssi scanning tool)
- Time synchronization (NTP) with timezones
- Over The Air firmware upgrade
- Full management with AT Command by serial, socket, SMS, modbus, SNMP, ...
- NAT, firewall, DHCP, etc. and other standard router characteristics
- 4G connectivity supervisor to maintain connection always active
- Internal configuration webserver (all logos and pictures can be customized by user)
- Clear and understandable application notes with examples (OpenVPN, serial gateways, modbus, datalogger, SMS, metering, SNMPv2 and SNMPv3...)
- Traffic control (prevents excessive data traffic consumption), TACACS+ (for HTTP, Telnet and SSH), multiuser profiles

VPN

- OpenVPN with client/server mode
- Permanent or activated by SMS, AT command, modbus, SNMP, serial...

*The Titan network architecture is protected by nearly 60 hardware and software patents

Cervello Stem - IoT Platform



GENERAL FEATURES

- Up to unlimited devices
- Autoprovisioning
- Real time dashboards
- Remote control
- Monitoring engine
- Alarms and alerts
- Rules engine
- Remote update
- Connect engine*
- API Keys*
- Analytics*
- Multi-tenant*
- White labeling*
- Custom admin role*

MONITOR

- Alarms, Events and Incidents
- Tracking*

CONTROL

- Command template
- OTA

DEVICES INVENTORY

- Add single from template
- Add Bulk from template and from autoprovisioning
- Manage: Device template, Groups, Assets and Bulk actions

CONNECT

- Topics*
- Transformation*
- Integration keys*

VISUALIZE

- Dashboards
- Reports

AUTOMATE

- Rules Engine
- Actions
- Triggers

SECURITY

- 2-factor authentication
- SSL for end user application
- Custom admin roles*

*Upgrade required

**Available with compatible devices with MTX-Tunnel or MTX-Titan

The equipment may vary from the description in this document. Webdyn reserves the right to make changes to the product(s) and or information contained herein without notice. This document may not be considered as a contract specification.