

MTX-IoT

Advanced 4G/3G modular programmable IoT modem

The MTX-IoT devices are an innovative and powerful solution for the most demanding IoT applications, enabling 4G/3G high speed cellular data transmission, GSM voice, SMS. MTX-IoT is Java J2ME programmable and have many interfaces (RS232/485, USB, optoisolated IOs, analog-to-digital converter) avoiding the need for further hardware, and reducing costs. Its modular architecture allows optional features like a GPS module, RF card, and analog audio. It is also compatible with MTX-Tunnel, a firmware that can be executed in our modems to use them as powerful gateways or routers.



Main Features



4G/3G/2G



USB 2.0



Up to 2x
RS232



RS485



Analog
input



GPIO



GPS
(optional)



Audio
(optional)



Wavenis
(optional)



Cervello
Stem



4G/3G/2G
serial gateway



GPIO
management



Relays
management



DynDNS
No-IP



MQTT/s



Modbus &
datalogger

■ HARDWARE ■ SOFTWARE

Strenghts & Benefits

- 4G/3G high speed cellular data transmission
- Java programmable.
- A complete set of interfaces.
- Compatible with MTX-Tunnel software, to turn the modem into a powerful gateway or router.
- Compatible with Cervello Stem IoT platform.

Applications

- Ideal for the most demanding IoT applications.
- Its modular architecture allows customization.

Specifications

MTX-IoT 4G	MTX-IoT 3G
<p>EUROPE: Penta-Band LTE: Bands 1, 3, 8, 20, 28 (700, 800, 900, 1800, 2100 MHz); Dual-Band UMTS/HSPA+: Bands 8, 1 (900, 2100 MHz); Dual-Band GSM: 900 and 1800 MHz</p> <p>USA: Quad-Band LTE: Bands 2, 4, 5, 12 (700, 850, 1700/2100 (AWS) and 1900 MHz); Tri-Band UMTS: Bands 5, 4, 2 (WCDMA/FDD 850, 1700/2100 (AWS) and 1900 MHz)</p> <p>AUSTRALIA: Quad-Band LTE: Bands 3, 5, 8, 28 (1800, 850, 900, 700 MHz); Tri-Band UMTS: Bands 1, 5, 8 (WCDMA/FDD 2100, 850, 900 MHz)</p>	<p>Five Bands UMTS (WCDMA/FDD) Bands: 800, 850, 900, 1900 and 2100 MHz</p> <p>Quad-Band GSM Bands: 850, 900, 1800 and 1900 MHz</p>
LTE Cat. 1 DL: max. 10.2 Mbps, UL: max. 5.2 Mbps	
HSPA+ Cat.8 data rates DL: max. 7.2 Mbps, UL: max. 5.76 Mbps	HSDPA Cat.8/HSUPA Cat.6 data rates DL: max. 7.2 Mbps, UL: max. 5.76 Mbps
GPRS Class 12 DL: max. 85.6 kbps, UL: max. 85.6 kbps	EDGE Class 12 data rates DL: max. 237 kbps, UL: max. 237 kbps GPRS Class 12 data rates DL: max. 85.6 kbps, UL: max. 85.6 kbps
	CSD data transmission up to 9.6 kbps, V.110, non-transparent
SMS: text and PDU mode support	SMS: text and PDU mode support

Interfaces

- 4G/3G/2G connectivity
- RS232 (up to 2)
- RS485
- GPIOs
- 3x pulse input counter
- GPS (optional)
- RF expansion (optional)
- Audio in/out (optional)
- Real Time Clock with alarm functionality

Connectors

- 2x SMA F: 4G
- 1x FME M: 3G
- 1x SMA F: GPS
- Micro USB
- 2x RJ11 (only for audio version)
- 1x DB9: RS232
- 1x DB15: RS232, GPIO, pulse input, ADCs
- 1x terminal block (5-ways): power supply, RS485, input
- SIM card



Characteristics

- Status LEDs
- DC input: 8 to 50 Vdc
- Temperature range: -30 - 85°C
- Dimensions: 78.1x66.8x37.2mm
- Weight: <190gr.
- Certifications: CE, FCC, PTCRB, RoHS, ISO9001

Processor

- Flash: 4G 31MB; 3G 10MB
- RAM: 4G 18MB; 3G 10MB
- CPU: 4G ARM11; 3G ARM11

References

PRODUCTS

■ MTX-IoT [3-S-N-N]*	000199801393
■ MTX-IoT [4-S-N-N]	000199801436
■ MTX-IoT [3-S-A-N]*	000199801403
■ MTX-IoT [3-S-N-GPS]*	000199801456
■ MTX-IoT [3-S-A-GPS]*	000199801448
■ MTX-IoT [4-S-N-GPS]	000199801452
■ MTX-IoT [4-S-N-W868]	000199801404
■ MTX-IoT [4-S-N-GPS] (AT&T)	000199801478
■ MTX-IoT [4-S-N-N] (AT&T)	000199801439
■ MTX-IoT [4-S-N-N] (AUS)	000199801446

*With MOQ

[C-Variants-Options-Wireless modules]

3: 3G/2G 4: 4G/3G/2G	STANDARD MODELS S: both DB9 and DB15 connectors are available CUSTOM MODELS 15: only connector available DB15 9: only connector available DB9 LC: neither DB9 nor DB15 connectors are available	N: no options A: analog audio S: SuperCap NOTE: not all options are available at the same time	N: no options W868: Wavenis/Emeris 25mW 868MHz W868LR: Wavenis/Emeris 500mW 868MHz W915: Wavenis/Emeris 25mW 915MHz W915LR: Wavenis/Emeris 500mW 915MHz GPS: GPS/Glonass (-165dBm) NOTE: if using 2 modules, the RS232 (8-wire) port (DB9) will not be available anymore
---------------------------------------	--	---	---

Features & Compatibility

MTX-IoT			
	STANDARD VERSIONS	CUSTOM VERSIONS (by request only)	
	-S	-15	-9
GPS	*	*	*
RS232 (8-wire)	X		X
RS232 (4-wire)	X	X	
RS485	X	X	X
USB	X	X	X
ADC	x2	x2	
Optoisolated IO	x4	x4	
Counter input	x3	x3	x1
Analog Audio (A)	(*1)	(*1)	(*1)
Internal wireless module	(*1)	(*1)	(*1)

*Optional

(*1) option. See incompatibility table

	3G (3G/2G)	4G (4G/3G/2G)	RS232 (8-wire) DB9	RS232 (4-wire) DB15	RS485	-A (Analog audio)	-S (SuperCap)	Wireless module	GPS module
3G (3G/2G)									
4G (4G/3G/2G)									
RS232 (8-wire) DB9								(*1)	(*1)
RS232 (4-wire) DB15								(*1)	(*1)
RS485								(*1)	(*1)
-A (Analog audio)									
-S (SuperCap)									
Wireless module			(*1)	(*1)	(*1)				
GPS module			(*1)	(*1)	(*1)				

MTX-Tunnel Software Features

CONNECTIVITY

- 4G/3G/2G serial gateways: TCP client, TCP server, UDP client/server, accept incoming CSD calls, up to 2 simultaneous tunnel
- IP connectivity mode: permanent 100% time, under request (SMS, missed call), change on a digital input, analog input out of level, serial data on RS232/RS485 port, scheduled date/hour/time

TCP SERVICES

- Web server, Telnet, SNMP, Tacacs+, NTP
- Datalogger: MQTT, MQTTS, HTTP, HTTPs, FTP
- Shows the status of digital and analog inputs
- Change digital output level and relays
- Execute AT commands remotely: Telnet, MQTT/MQTTS, SMS, HTTP

SECURITY

- Authorized phone numbers
- Firewall IP, SSL/TLS connections, encrypted config
- Secure OTAP (remote FW upgrade)
- Watchdog hardware

ALARMS AND CONTROL

- Send SMS/MQTT alarm when the level of digital or analog input change
- SMS can be sent to up to 10 remote users
- Execute remote AT commands
- Change the status of digital outputs & relays
- Customizable SMS commands

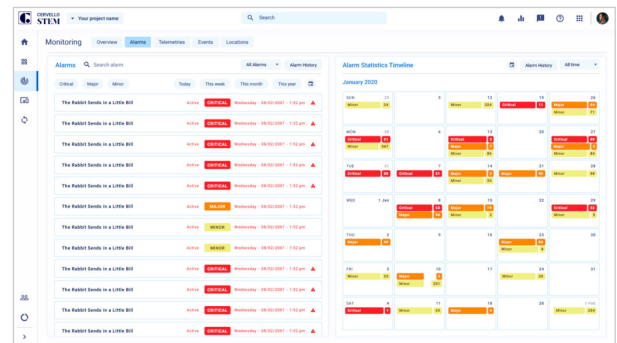
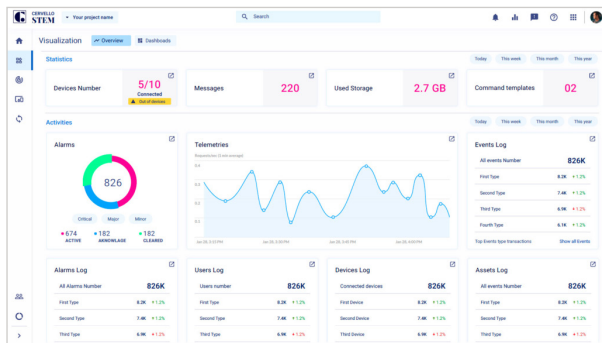
SOLUTIONS FOR DYNAMIC IP

- IP session using a SMS or missed call
- DynDNS and NoIP
- Private DNS

METERING, MODBUS, SENSORS...

- 868 MHz remote monitoring sensors (Wavenis)
- Master for modbus RTU devices, Modbus TCP slave, Modbus TCP to RTU gateway
- Relays control
- Access to serial devices using 2G/3G/4G and GSM
- Astronomical clock

Cervello Stem - IoT Platform



GENERAL FEATURES

- Up to unlimited devices
- Autoprovisioning
- Real time dashboards
- Remote control
- Monitoring engine
- Alarms and alerts
- Rules engine
- Remote update
- Connect engine*
- API Keys*
- Analytics*
- Multi-tenant*
- White labeling*
- Custom admin role*

MONITOR

- Alarms, Events and Incidents
- Tracking*

CONTROL

- Command template
- OTA

DEVICES INVENTORY

- Add single from template
- Add Bulk from template and from autoprovisioning
- Manage: Device template, Groups, Assets and Bulk actions

CONNECT

- Topics*
- Transformation*
- Integration keys*

VISUALIZE

- Dashboards
- Reports

AUTOMATE

- Rules Engine
- Actions
- Triggers

SECURITY

- 2-factor authentication
- SSL for end user application
- Custom admin roles*

*Upgrade required

**Available with compatible devices with MTX-Tunnel or MTX-Titan

The equipment may vary from the description in this document. Webdyn reserves the right to make changes to the product(s) and or information contained herein without notice. This document may not be considered as a contract specification.