

Product Catalogue

Vertical Solutions | Modems | Routers | IoT Platform & Software



Contents

Page 4 **Smart Grid & Photovoltaic**
Stay connected to your field data

Page 5 **Smart Cities**
The best way to connect your city services

Page 6 **Smart Building & Home**
Make life easier by connecting your buildings

Page 8 **Smart Industry 4.0**
Revolutionize your industrial production

Page 10..... **Smart Metering**
IoT solutions for metering

Page 11 **Modems & Routers**
Multipurpose devices

Page 12 **Software**
Our powerful IoT platform and software included in compatible devices

Page 14 **Centralized Web Portal**
Turnkey Solar Monitoring

Page 16 **Accessories**

Why Webdyn

At Webdyn we work to manufacture the best IoT devices on the market. Our product portfolio is designed to help our customers access opportunities within the rapidly growing IoT and industrial IoT environment. We design modems, gateways, routers and IoT software solutions. From automation, metering or photovoltaic, to public transportation connectivity – hundreds of thousands of our networking devices are currently at the heart of our customers’ IoT solutions.



Smart Grid & Photovoltaic
Managing power production and consumption thanks to the use of wireless communications in solar installations.



Smart Cities
Connected sensors, vehicles, and devices require secure and reliable IoT connectivity products.



Smart Metering
Real-time information on power consumption for a more sustainable world.



Smart Building & Home
Smart building management thanks to a smart network of wireless devices and cloud management systems.



Smart Industry
Global adoption of automation demands the ability to monitor and manage equipment remotely to increase productivity.



Smart Transportation
Communication devices with certificates for transportation, to achieve a more intelligent transportation network.

Smart Grid & Photovoltaic

Stay connected to your field data



WebdynSun

Gateway for solar plants that monitors and collects data from solar plants in a single device.

- RS485/232
- Ethernet
- TIC meter
- DIN rail
- Pulse inputs
- Plug & Play
- Analog inputs
- Remote configuration
- Digital I/O
- Alarms



WebdynSunPM

Gateway for solar plants with Power Management that collects and analyzes data, and manages photovoltaic installations.

- RS485
- User programmable
- 0-10V / 4-20mA
- Compatible with most platforms
- Pulse inputs
- Secure MQTT, MQTTS, FTP/SFTP
- Relay
- Plug & Play
- Ethernet
- Remote configuration
- DIN rail
- PM: zero injection capability

Smart Cities

The best way to connect your city services



MTX-StarSensor

LTE/4G IoT modem for sensor control with IP67, Ultra Low Power, and primary batteries up to 10 years autonomy.

- 4G/3G
- 1x sensor power supply
- Dual SIM
- Primary batteries
- IP67
- Additional optional features
- Ultra Low Power

■ Highlights

Access the data from your connected urban furniture, your water-gas-electricity meters, your public lighting systems to give your local population the best service.

Covers recurring city needs such as public lighting, electric vehicle charging stations, pollution monitoring, refuse collection or parking.

Regardless of the application, it connects urban furniture and supplies network coverage.

Smart Building & Home

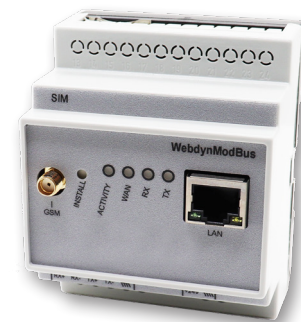
Make life easier by connecting your buildings



WebdynEasy LoRaWAN

The WebdynEasy LoRaWAN platform is specific to wireless networks using LoRa radio technology.

- 4G/3G
- LoRaWAN
- RS485/422
- Ethernet
- Open VPN
- Webservices
- Plug & Play
- Remote configuration
- Modbus RTU and TCP
- FTP/S, HTTP/S connection



WebdynModbus

The WebdynModbus gateway is used to monitor and collect data from Modbus equipment (slaves).

- 4G/3G
- Ethernet
- RS485
- Modbus TCP and RTU
- DIN rail
- Plug & Play
- Remote configuration



WebdynModbus β

Gateway for solar plants with Power Management including a RTU/TCP Modbus, GPRS/WiFi and Ethernet interfaces..

- 4G/3G/2G
- Ethernet
- RS485
- Modbus TCP and RTU
- IP network interfaces
- Power supply +5V
- Temperature -5 to 60°C



MTX-Router-Q

An innovative LTE cat.4/4G entry level industrial IoT router with Gigabit Ethernet, and 3G/2G fallback.

- 4G/3G/2G
- GigaEthernet
- AC power supply
- LiPo battery
- DIN rail
- Webserver
- SMS control
- Email
- VPN: IPSEC, OpenVPN

■ Highlights

Specifically designed for **building and home management**.

Control energy efficiency, temperature control, security, maintenance, etc.

Also ideal for **industrial equipment** and products: PLCs, machines, boilers, air conditioning, etc.

Remote control in real time through mobile devices, computers, etc., and monitor your data with our IoT platform.

Smart Industry 4.0

Revolutionize your industrial production



MTX-Router-Titan II-S

LTE/4G/3G/2G industrial IoT router that provides an easy integration and a variety of powerful interfaces.

- 4G/3G/2G
- Ethernet
- RS232, RS485
- WiFi
- 2x digital inputs
- USB
- DIN rail
- Webserver
- Modbus
- Datalogger
- HTTP/S, MQTT/S, FTP/S
- VPN: IPSEC, OpenVPN



MTX-Router-EOS 5G

Entry level compact IoT device with 5G connectivity, developed for industrial applications, dual SIM and 3x Ethernet.

- 5G
- Dual SIM
- WiFi
- 3x Ethernet
- RS232, RS485
- DIN rail
- Modbus
- DHCP
- Firewall
- Serial tunnelling
- MQTT
- VPN



MTX-Router-EOS

Entry level compact IoT device developed for industrial applications, with LTE/4G, dual SIM and 3x Ethernet.

- 4G/3G/2G
- Dual SIM
- WiFi
- 3x Ethernet
- RS232, RS485
- DIN rail
- Modbus
- DHCP
- Firewall
- Serial tunnelling
- MQTT
- VPN



MTX-IoT-S

Innovative and powerful all-in-one solution for the IoT sector, with LTE/4G connectivity, 8x digital I/O, 2x ADC, ULP and battery.

- 4G/3G/2G
- RS232, RS485
- 8x digital I/Os
- 2x ADC, 4x DAC
- Latch relay
- Ultra Low Power
- GPS
- GPIO management
- Relay management
- MQTT/s
- Modbus
- Datalogger

■ Highlights

Ideal for a wide range of **industrial equipment** and different products: PLCs, machines, boilers, air conditioning, etc.

Improvement of **city management**: development of personalized products as needed.

Connect machines, tools, sensors, and other equipment on the floor to give process engineers and managers more **visibility** of the production.

Smart Metering

IoT solutions for metering



MTX-StarEnergy-M

The MTX-StarEnergy-M is an innovative industrial modem with a set of features specially oriented for the electric market.

- 4G/3G/2G
- USB 2.0
- RS232/422/485
- 230V
- DIN rail
- Webserver
- Serial gateway
- SNMPv3
- TACACS+
- Watchdog
- CSD

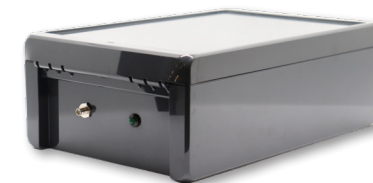


MTX-StarEnergy-E

Innovative industrial modem that comprises a set of features specially oriented to the electric market.

- 4G/3G/2G
- USB 2.0
- RS232/422/485
- AC&DC powered
- DIN rail, wall mount
- CSD
- Webserver
- Serial gateway
- SNMPv3
- TACACS+
- Firewall
- Watchdog

Modems & Routers



MTX-StarSensor

Powerful modem for monitoring.

- 4G/3G
- Dual SIM
- IP67
- ULP
- 1x sensor power supply
- Primary batteries
- Additional hw

AGRICULTURE SMART CITIES METERING BMS



MTX-IoT-S

LTE/4G programmable modem.

- 4G/3G
- RS232/485
- 8x digital I/O
- 2x ADC, 4xDAC
- Dual SIM
- Latch relay
- Ultra Low Power
- GPS

SMART CITIES METERING INDUSTRY TRANSPORTATION BMS



MTX-StarRoad II

IoT router for automotive with ITxPT.

- LTE /4G
- 2x RS232/485
- 8x DI, 4x DO
- 2x CAN
- 1x Ethernet
- 1x HDMI
- GPS
- ITxPT compliant

TRANSPORTATION



MTX-Router-Titan II-S

LTE/4G/3G industrial IoT router.

- 4G/3G/2G
- Ethernet
- RS232/485
- WiFi
- Digital input
- USB 2.0
- DIN rail
- Titan software

SMART CITIES METERING INDUSTRY TRANSPORTATION



MTX-Router-EOS 5G

5G, dual SIM & 3x Ethernet router.

- 5G
- Dual SIM
- WiFi
- 3x Ethernet
- RS232/485
- DIN rail
- Modbus
- Serial tunnelling

SMART CITIES INDUSTRY TRANSPORTATION BMS



MTX-Router-Q

LTE cat.4/4G entry level router.

- 4G/3G/2G
- Giga Ethernet
- AC power
- LiPo battery
- DIN rail
- Webserver
- SMS control
- Email

SMART CITIES INDUSTRY BMS

Software

MTX-Titan

Included in all MTX-Router-Titan devices, the configuration can be intuitively done from any computer.

Serial gateways:

- 3 simultaneous gateways
- Modes: TCP server/TCP client
- SSH encryption enabled
- Incoming CSD call for metering applications

Modbus:

- Modbus TCP/Modbus RTU gateway
- Modbus TCP/RTU to SNMP gateway (SNMP)
- Modbus slave RTU/TCP
- User scripts

Datalogger:

- Data from sensors (temperature, distance...)
- Serial data collected by RS232, RS485 or USB
- GPS data for tracking applications
- Automatic data sending with JSON format

SMS:

- Full control by SMS with phone authorizations
- Alarms (digital input, temp., M-Bus data read)
- Send/receive SMS by Modbus TCP (for PLC)

Sensor compatible:

- Temperature, distance and other sensors
- Modbus RTU/TCP sensors
- RF868 LPWAN sensors
- Internal jamming detection sensor with alarm

VPN:

- IPSEC + OpenVPN with client/server mode (25 clients)
- Permanent or activated by SMS, AT command...

Other:

- Compatible with DynDNS/No-IP & private DNS
- GSM cell location
- Programmable autoreset (schedule, timer...)
- Multioperator SIM utilities (integrated RSSI)
- Time synchronization (NTP) with timezones
- Over The Air firmware upgrade
- Full management with AT command
- NAT, firewall, DHCP, etc. and other features
- 4G connectivity supervisor
- Traffic control, TACACS+ multiuser profiles

MTX-Tunnel

Included in all compatible modems, it turns them into powerful LTE/4G/3G/GPRS series gateways.

Connectivity:

- 4G/3G/2G serial gateways: TCP client, TCP server, UDP client/server, accept incoming CSD calls, up to 2 simultaneous tunnel
- IP connectivity mode: permanent 100% time, under request (SMS, missed call), change on a digital input, analog input out of level, serial data on RS232/RS485 port, scheduled date/hour/time

TCP services:

- Web server, Telnet, SNMP, TACACS+, NTP
- Datalogger: MQTT, MQTTs, HTTP, HTTPs, FTP
- Shows the status of digital and analog inputs
- Change digital output level and relays
- Execute AT commands remotely: Telnet, MQTT/MQTTs, SMS, HTTP

Security:

- Authorized phone numbers
- Firewall IP, SSL/TLS connections, encrypted configuration
- Secure OTAP (remote FW upgrade)
- Watchdog hardware

Alarms:

- Send SMS/MQTT alarm when the level of digital or analog input change
- SMS can be sent to up to 10 remote users
- Execute remote AT commands
- Change the status of digital outputs & relays
- Customizable SMS commands

Metering, modbus, sensors:

- 868 MHz remote monitoring sensors (LPWAN)
- Master for Modbus RTU devices, Modbus TCP slave, Modbus TCP to RTU gateway
- Relays control
- Access to serial devices using 4G/3G/2G and GSM
- Astronomical clock

Solutions for dynamic IP:

- IP session using a SMS or missed call
- DynDNS and NoIP
- Private DNS

■ Highlights

The [MTX-Titan software](#) can connect locally via Ethernet or WiFi, or remotely via 4G/3G/2G. It can also connect via SMS, Modbus RTU, Modbus TCP and SNMP.

The [MTX-Tunnel software](#) provides remote connectivity to devices that only have an RS232 or RS485 serial port, so they become smart devices, and are able to send sensor data (temperature, humidity, pulse counters...) to the cloud.

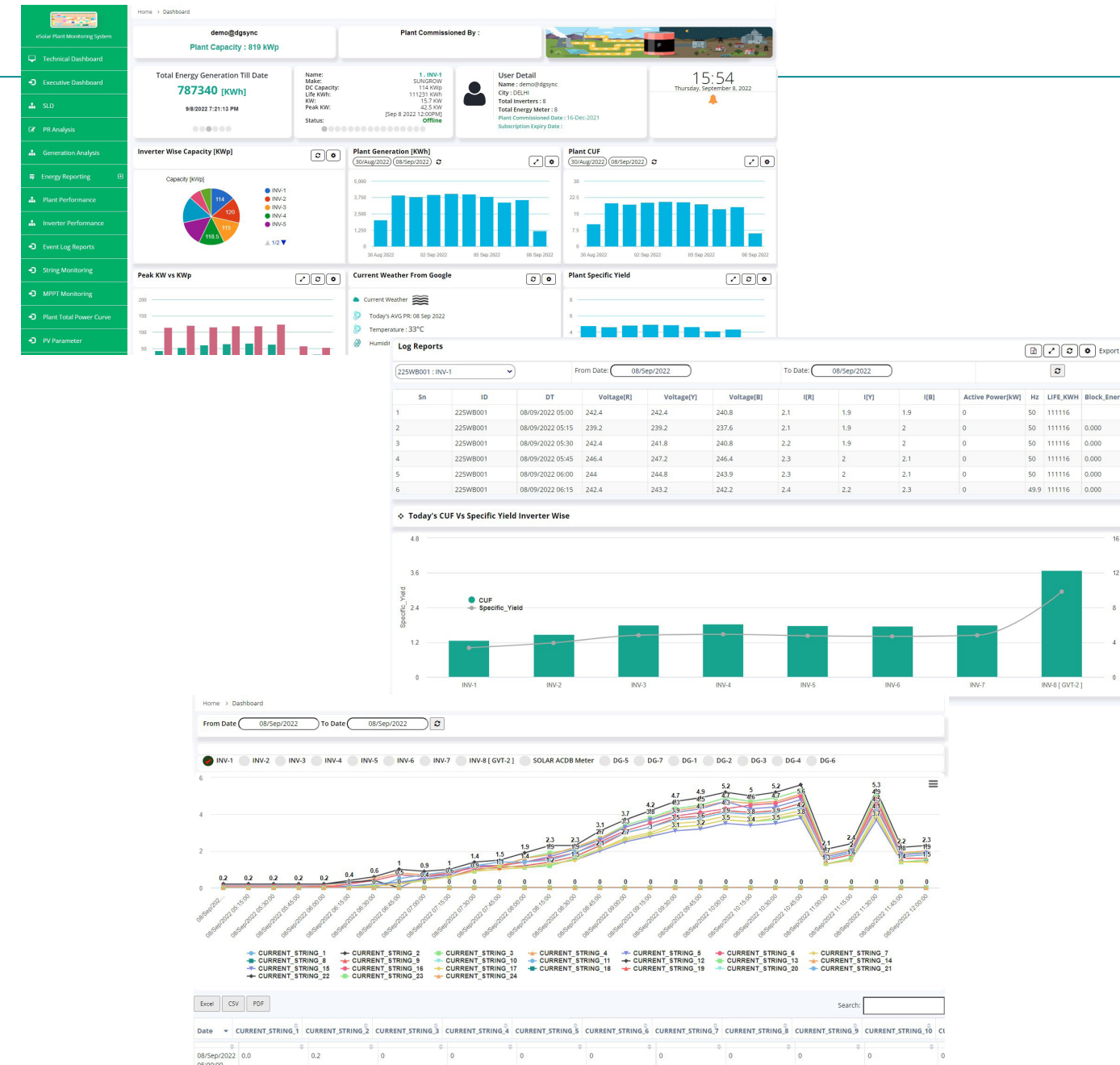
Centralized Web Portal

Turnkey Solar Monitoring

Webdyn in association with our Technologically Leading partners offers - flexible, powerful and secure solar monitoring platform which helps leading renewable companies identify underperforming plants, increase power production and streamline O&M workflows.

Our on offer Web Portals comes standard with a wide range of features to monitor large portfolios, analyze plants' performance and efficiently maintain and manage assets.

- Ensure optimal day-to-day energy production
- Get alerted in case of an issue
- Follow performance on your mobile
- Receive complete monthly reporting



Highlights

Some of our Centralized Web Portal **selected features** include Analytics & Dashboards; Alerts & Events; Reporting; Data quality check and filtering.

Renewable Performance Analytics in your Pocket with our **Mobile App** with: Real-time data analytics; Interactive and intuitive dashboards; Available on iOS & Android.

Accessories



Irradiation Sensors

Class II & Class I pyranometers.

- Class A, B, C
- 4/20 mA current loop
- 285 to 3000x10⁻⁹ m
- -40 to +80°C



Radiation Sensor

Silicon solar sensor Type SOZ 03.

- -40° to +65°C
- 400 to 1100 nanometers
- 0 to 1800 W/m² range
- ±5% of full scale accuracy



Temperature module

WDS-MT-04I transmitter.

- 0 to 100°C measuring range
- ± 0.3°C accuracy
- 4-20mA output
- 12 to 26 VDC supply voltage



Radiation Sensor

Solar sensor WDS-RD-300I.

- -40° to +65°C
- 400 to 1100 nanometers
- 0 to 1800 W/m² range
- ±5% of full scale accuracy



Barometric Sensor

Pressure Sensor SB-100.

- 15 to 115 kPa pressure range
- -40 to 125°C
- 0 to 5 V voltage output
- > 50 mW power use



Rain Collector

Stand alone 6463 & 646.

- ±4% of total accuracy
- 12 m cable
- Modular RJ-11 connector
- 214cm² collection area



Environmental sensors

Industrial air quality sensors.

- AQBot for air quality monitoring
- Dustroid to measure dust levels
- Odosense for odour monitoring
- Polludrone for air quality



Weather Sensor

Automatic weather station.

- -20 °C to 60 °C
- 0-95% RH humidity
- 5 Watt power consumption
- 12 hours battery backup



Anemometer

Vantage PRO2 accessories

- 0,5 to 89 m/s range
- -40° to +65°C
- ±2 mph accuracy wind speed
- ±3° accuracy wind direction



Wind Speed Sensor

WDS - WS - 04L.

- 2 to 60m/sec range
- Pulse, 60Hz = 240 Km/hr
- 3 cup Dia 15cms
- 2 m cable



Temp. Humidity Sensor

Model RHT000S.

- 0 to 80°C measuring range
- ± 0.3°C accuracy @23°C
- 4-20mA output
- 12 to 26 VDC supply voltage



Temp. Transmitter

Ambient transmitter WDS - AT - 04I

- 0 to 100°C measuring range
- ± 0.3°C accuracy
- 4-20mA output
- 12 to 26 VDC voltage



16 Channels Module

Isolated digital input module.

- +4V ~ +36V input range
- 9~24V (AC/DC) power input
- <0.6W power consumption
- -20 ~ 85°C



4/8 Channel Module

DIN rail analog input module.

- 0-20A, 4-20 mA input
- ±0.25% of reading accuracy
- 100mS per channel sampling
- RS485, 2 wire port



Data Transceiver

Wireless long range transceiver.

- -40 ~ +85°C
- 10% ~ 90% humidity
- 425 ~ 450.5MHz frequency
- 8 ~ 28V DC supply voltage



EL8400

Multi-functional power meter.

- 45-65Hz frequency
- ±0.01Hz accuracy
- AC, DC 80V ~ 270V
- -10 ~ +55°C

What & Where

R&D Offices

- Madrid (Spain)
- Paris (France)
- Barcelona (Spain)
- Seville (Spain)

Commercial Offices

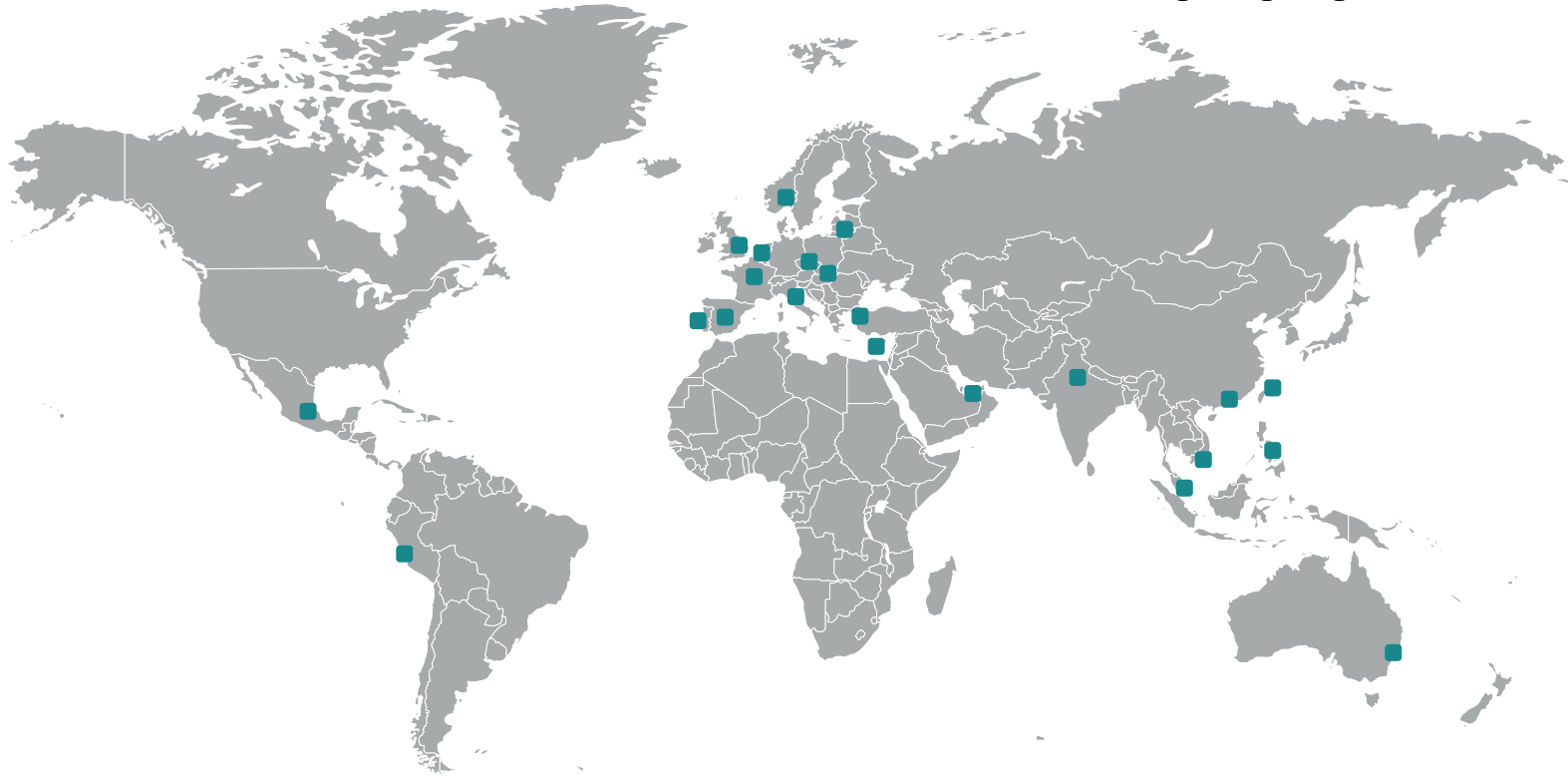
- Delhi (India)
- Lisbon (Portugal)
- Dubai (UAE)
- Lima (Peru)
- Taipei (Taiwan)

Distributors

- Syscom-ProREP (France)
- Tyrrell (UK)
- Maritex (Poland)
- Alcom (Benelux)
- Elteco (Norway)
- DeltaM2M (Denmark)

- Melchioni (Italy)
- Sigint Solutions (Cyprus)
- FCC PS (Czech Rep.)
- Gamaxnet (Hungary)
- Infopulsas (Lithuania)
- Scatek (Turkey)
- Macnica Galaxy (Taiwan)
- Liseng (Hong Kong)

- FutureFirst (Singapore)
- Oritech (Vietnam)
- RSPOT (Philippines)
- Australis M2M (Australia)
- Amplicon (EAU)
- AresM2M (Peru)
- Enertronics (Mexico)



SPAIN | FRANCE | INDIA | PORTUGAL | APAC

www.webdyn.com | contact@webdyn.com