

Accessories Catalogue

Sensors | I/O Modules | Meters | Antennas | Power Supplies & DIN Rail



Contents

Page 3 **Sensors**

Page 7 **I/O Modules**

Page 9 **Meters**

Page 10 **Antennas**

Page 14 **Power Supplies & DIN Rail**

About Webdyn

At Webdyn we work to manufacture the best IoT devices on the market, but our team's mission is to solve the challenges of our customers' projects.

Our accessories complete our products so you don't lack anything to start implementing them in your project.

**YOUR NEEDS,
OUR STRENGTHS**

Sensors

Sens'RF LoRaWAN

Gather local data and send it to your server via RF.

- **Protocol:** LoRaWAN 1.0 Class A
- **Sensitivity:** up to -136dBm
- **Power:** 25mW
- **Output:** 0-10V/4-20mA
- **DC input:** +6 to +24 Vdc external or type C battery
- **Mounting:** wall, DIN rail, tabletop

REFERENCES

- Sens'RF LoRaWAN Pulse
- Sens'RF LoRaWAN THP
- Sens'RF LoRaWAN TIC



WG0307-D01

WG0307-D02

WG0307-D03

Sens' Temperature - Contact

Contact temperature sensor.

- **Output ampere:** 1x 4..20 mA, max. load 500 Ω
- **Power supply:** 15..24V
- **Output signal range temperature:** 0 to +50°C
- **Protection:** IP65 according to EN 60529
- **Cable entry:** Flextherm M16, for wire $\varnothing=3.7$ mm
- **Ambient condition:** max. 85% rH

REFERENCES

- Contact Temperature Sensor



AC1102-01

Sensors

Sens' Temperature - Outdoor

Outdoor temperature sensor.

- **Output ampere:** 1x 4..20 mA, max. load 500 Ω
- **Power supply:** 15..24V, 0,5 Watts under 24V
- **Output signal range temperature:** -50 to +50°C
- **Protection:** IP65 according to EN 60529
- **Cable entry:** Flextherm M16, for wire $\varnothing=3.7$ mm
- **Ambient condition:** max. 85% rH



REFERENCES

- Outdoor Temperature Sensor

AC1101-01

Sens' Temperature - Outdoor Modbus

Modbus slave outdoor temperature sensor.

- **Network technology:** RS485 Modbus RTU, half-duplex, baud rate 9600, 19200, 38400, 57600, parity: none, even, odd
- **Power supply:** 15..35V
- **Output signal range temperature:** -20 to +80°C
- **Protection:** IP65 according to EN 60529
- **Cable entry:** M25, for wire max. $\varnothing=7$ mm
- **Ambient condition:** max. 85% rH



REFERENCES

- Outdoor Temperature Sensor Modbus Slave

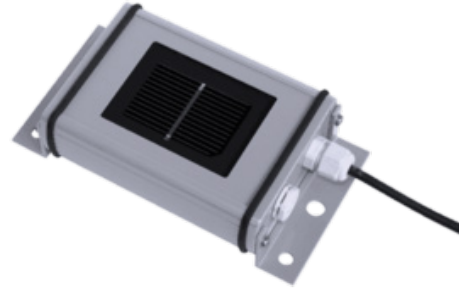
AC1101-02

Sensors

Sens' Irradiation

Irradiation and temperature sensor.

- **Irradiance measurement:** up to 1500 W/m²
- **Cell temperature measurement:** -40 to +90°C
- **Voltage supply:** 12 to 24 VDC
- **Protocol:** Modbus RTU
- **Interface:** RS485 up to 38.4 kBaud
- **Galvanic isolation:** 1.000 V (power supply & bus)



AC1001-01

REFERENCES

- Irradiance & Temperature Sensor

Sens' Pyranometer

Measures hemispherical solar radiation.

- **Calibration uncertainty:** < 1.8% (k=2)
- **Calibration traceability:** WRR
- **Spectral range:** 285 to 3000 x 10⁻⁹m
- **Rated operated temperature range:** -40 to +80°C
- **Rated operated voltage range:** 5 to 30 VDC
- **Communication protocol:** Modbus over RS485



AC1401-01

REFERENCES

- Second Class Pyranometer

Sensors

MTX-OpticalProbe IEC

Optical probe for data communication.

- **Certificates:** IEC62056-21, EIA232
- **Power supply:** +3.3~5VDC, 15 mA
- **Transmitting:** 38400/57600 bps
- **Connector:** DB9 male connector
- **Environment temperature in application:** -10~65 °C
- **Pin-out:** Pin2-Rx; Pin3-Tx; Pin5-GND; Pin1, 4, 6, 8, 9

REFERENCES

- MTX-OpticalProbe-IEC-232-DB9M



000118001153

I/O Modules

Sens' IOS - 16 digital inputs

16 digital inputs modbus slave.

- **Input channels & range:** 16; +4V ~ +36V
- **Counter frequency:** 100Hz 16 ch.; 1000Hz 1 ch.
- **Counter length:** 32 bit
- **Output:** BUS RS485 (standard Modbus protocol)
- **Power input:** 9 ~ 24V (AC/DC)
- **Power consumption:** <0.6W
- **Ambient temperature Operation:** -20 to +85°C



AC1201-02

REFERENCES

- 16 Digital Inputs Modbus Slave

Sens' IOS - 8 digital inputs/6 outputs

8 digital inputs/6 digital outputs modbus slave.

- **Input channels & range:** 8; +4V ~ +36V
- **Counter frequency:** 100Hz 8 ch.; 1000Hz 1 ch.
- **Counter length:** 32 bit
- **Output channel & current:** number 6; max. 40mA
- **Output:** BUS RS485 (standard Modbus protocol)
- **Power input:** 9 ~ 24V (AC/DC)
- **Power consumption:** <0.6W



AC1201-01

REFERENCES

- 8 Digital Inputs/6 Digital Outputs Modbus Slave

I/O Modules

Sens' IOS - 8 analog inputs

8 analog inputs modbus slave.

- **Input types:** 0-20 mA, 4-20 mA, 0-80mV 0-1.25 V, 0-5 V, 0-10 V, 1-5 V; Thermocouple types: J, K, T, R, S, B and N
- **Accuracy:** $\pm 0.25\%$ of reading
- **Sampling:** 100mS per channel
- **Port:** RS485, 2 wire
- **Protocol:** Modbus RTU
- **Baud rate:** 2400, 4800, 9600, 19200, 38400, 57600, 115200
- **Supply operated:** 20~32 VDC



REFERENCES

- 8 Analog Input Modbus Slave

AC1202-01

Meters

Sens' Meter

Single phase meter.

- **Power consumption:** <2W/10kVA
- **Frequency:** 50 Hz
- **AC voltage withstand:** 4 kV for 1 minute
- **Impulse voltage withstand:** 6kV-1.2uS waveform
- **Over current withstand:** 30 I_{max} for 0.01s
- **Max. reading:** 99999.99 kWh

REFERENCES

- Single Phase Meter



AC1301-01

Sens' Meter

Three phase meter.

- **Operating temperature:** -25 to +55 °C
- **Output:** 2 pulse output, 1 Modbus RTU output
- **Accuracy:** MID B+D: Class I
- **Default Modbus address:** 1-247
- **Connection:** RS485
- **Power connection:** up to a maximum of 100A

REFERENCES

- Three Phase Meter



AC1302-01

Antennas

Sens'Antenna

Wall mounted external antenna.

- **Frequency:** 698/960/1710/2170/2500/2700 MHz
- **Impedance:** 50 Ohm
- **Certificate:** IP67
- **Connector:** SMA M
- **Temperature:** -40 to +85 °C
- **Power:** max. 25 Watts

REFERENCES

- Antenna GSM5+LTE700/2600 SMA M -IP67- RG58 - 5m cable
- Antenna GSM5+LTE700/2600 SMA M -IP67- RG58 - 10m cable
- Antenna GSM5+LTE700/2600 SMA M -IP67- RG58 - 20m cable



AC0201-11

AC0201-13

AC0201-12

Screwed OPN Antenna GSM5 LTE700/2600 MIMO

4G/LTE antenna.

- **Type:** Antenna Screwed
- **Frequency:** 699-960/ 1710-2170 / 2500-2690 MHz
- **Connector:** 2 x SMA M
- **Gain:** 3 dBi
- **Dimensions:** 77.3 x 65.5mm (dxh)



REFERENCES

- MTX-Antenna Screwed GSM5+LTE700/2600 MIMO - 2xSMA M - RG174 - 3m **000118016052**

Antennas

STUBSW Antenna LTE2600

4G/LTE antenna.

- **Type:** Antenna Stub
- **Frequency:** 690-960/824-960/1710-1880/2550-2650 MHz
- **Connector:** SMA M
- **Gain:** 5 dBi / 1 dBi
- **Dimensions:** 280 mm / 171 mm



REFERENCES

- MTX-Antenna STUBSW GSM5+LTE2600 5dbi SMA M **000118009240**
- MTX-Antenna STUBSW GSM5+LTE2600 5dbi SMA M + Mag. Base - RG174 3m **000118009242**
- MTX-Antenna STUBSW WTR GSM5+LTE700/2600 SMA M **000118012332**

Screwed CMO Antenna LTE MIMO

4G/LTE antenna.

- **Type:** Antenna Screwed
- **Frequency:** 800/900/1800/1900/2100/2600 MHz
- **Connector:** 2 x SMA M
- **Gain:** 5 dBi
- **Dimensions:** 102 x 33.5mm (dxh)



REFERENCES

- MTX-Antenna Screwed CMO GSM5+LTE700/2600 5dBi MIMO - R1741 - 2m **000118012364**

Antennas

STUBBY BT Antenna WiFi

WiFi antenna.

- **Type:** Antenna Stub
- **Frequency:** 2.4 - 2.5 GHz
- **Connector:** SMA M
- **Gain:** 0 dBi
- **Dimensions:** 36 x17.5 mm (max)

REFERENCES

- MTX-Antenna STUBBY BT 2.4GHz SMA M RP

000118012095



STUBSW Antenna WiFi

WiFi antenna.

- **Type:** Antenna Stub
- **Frequency:** 2.4 GHz
- **Connector:** SMA M RP
- **Gain:** 5 dBi
- **Dimensions:** 190x12.7 mm

REFERENCES

- MTX-Antenna STUBSW 2.4GHz SMA M RP 5dBi

000118009238



Antennas

Adhesive BLADEMID Antenna WiFi

WiFi antenna.

- **Type:** Antenna Adhesive
- **Frequency:** 2.4 - 5 GHz
- **Connector:** SMA M RP
- **Gain:** 2.5 dBi
- **Dimensions:** 110X18 mm



REFERENCES

- MTX-Antenna Adhesive BLADEMID 2.4/5GHZ SMA M RP - RG174 - 3m **000118009232**

Magnetic Antenna GPS

GPS antenna.

- **Type:** Antenna Magnetic
- **Frequency:** 1575.42 MHz (GPS)
- **Connector:** SMA M
- **Gain:** 28 dBi
- **Dimensions:** 43 mm x 33 mm x 14 mm



REFERENCES

- MTX-Antenna Magnetic GPS SMA M - RG174 - 3m **000118014010**
- MTX-Antenna Magnetic GPS SMA M - RG174 - 5m **000118009008**

Power Supplies & DIN Rail

Sens'Power Supply

24V DC Power supply.

- **Output voltage & current range:** 24V; 0~0.63A
- **Rated range & power:** 0.63A; 15.2W
- **Input AC voltage:** 85 to 264 VAC
- **Frequency range:** 47 to 63 Hz
- **Working temperature:** -30~+70°C
- **No load power consumption:** <0.3W
- **Loan burn-in text:** 100% full



REFERENCES

- 24V DC Power Supply

AC0103-00-DR15

MTX ACC AC Power Adapter - Tinned Wires AWG22

- **Input:** 100-240 Vca/50-60 Hz
- **Output voltage:** 12 Vcc
- **Output current:** 1.0 A
- **Power:** 12 W
- **Cable/Connector:** 1.8 m AWG22 cable/Tinned wires



REFERENCES

- MTX ACC AC Power Adapter EU - Tinned Wires AWG22
- MTX ACC AC Power Adapter US/JAP - Tinned Wires AWG22

000901006300

000901006023

Power Supplies & DIN Rail

MTX ACC AC Power Adapter – Tinned Wires AWG22

- **Input:** 100-240 Vca/50-60 Hz
- **Output voltage:** 12 Vcc
- **Output current:** 1.0 A
- **Power:** 12 W
- **Cable/Connector:** 1.8 m AWG22 cable/Tinned wires



REFERENCES

- MTX ACC AC Power Adapter Universal Tinned Wires AWG22

000901006443

MTX ACC AC Power Supply Universal – Mounted on DIN

- **Input:** 100-240 Vca/50-60 Hz
- **Output voltage:** 12 Vcc
- **Output current:** 1 A
- **Power:** 12 W



REFERENCES

- MTX ACC AC Power Supply – DIN – MTX-12-1 Universal Input

000901006024

Power Supplies & DIN Rail

MTX-T Rail DIN Mounting

- MTX-IoT
- MTX-T
- MTX-T2
- MTX-Router-Titan mini
- MTX-GTW



REFERENCES

- MTX-T ACC Rail DIN Mounting Kit for MTX (includes 2 screws)

000118001090

MTX-T Rail DIN Mounting

- MTX-Router-Titan II
- MTX-GTW II



REFERENCES

- MTX-T ACC Rail DIN Mounting Kit (Titan II / GTWII)

000600110089

MTX-T Wall Mounting

- MTX-Router-Titan II
- MTX-GTW II



REFERENCES

- MTX-T ACC Wall Mounting Plate (Titan II / GTW II)

000000427108



SPAIN | FRANCE | INDIA | PORTUGAL | TAIWAN

www.webdyn.com | contact@webdyn.com