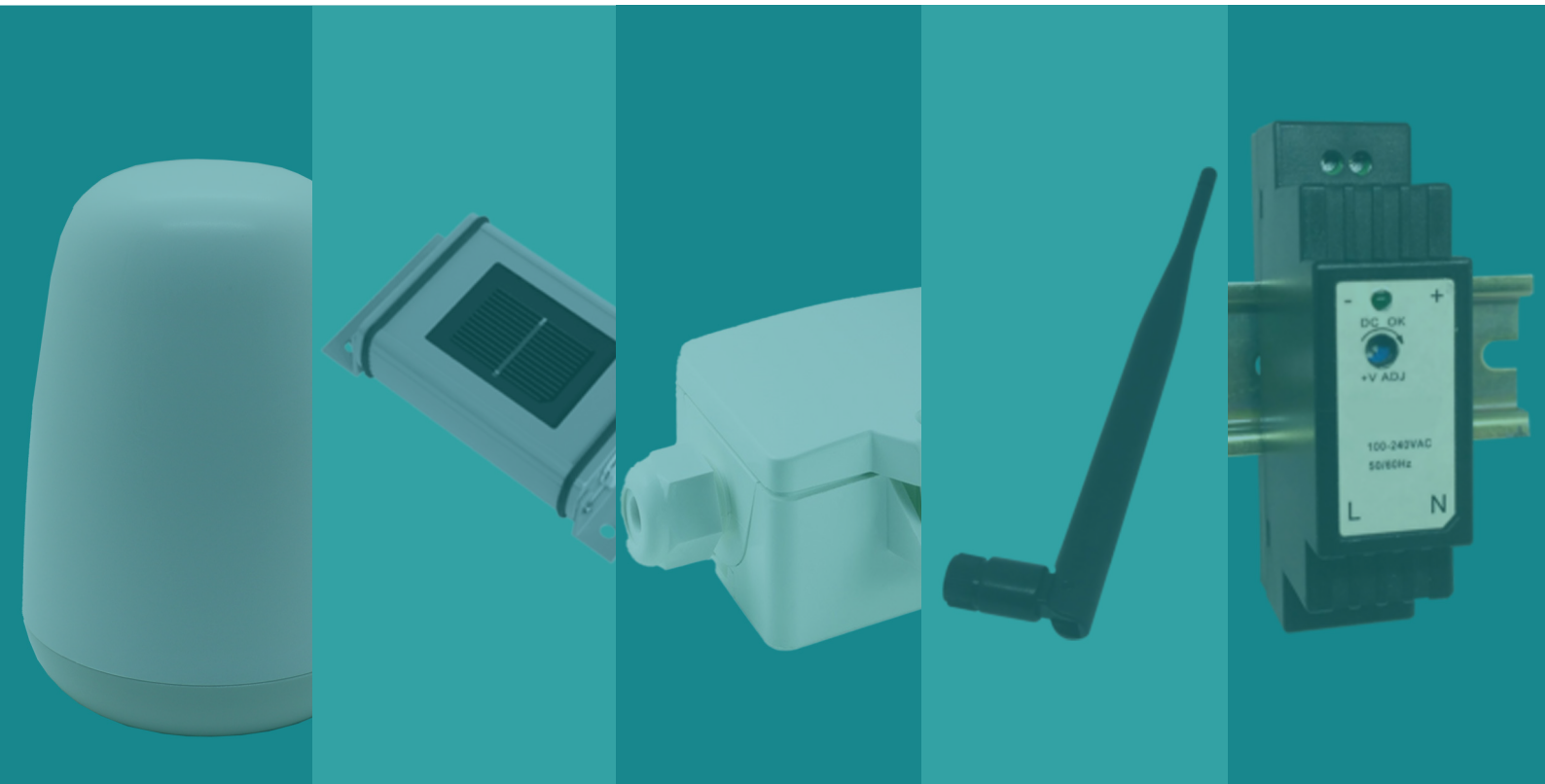


Accessories Catalogue

Sensors | Antennas | Power Supplies | DIN Rail



Contents

Page 3 **Sensors**

Page 6 **Antennas**

Page 7 **Power supplies & DIN rail**

Page 9 **Extension cables USB/TIC**

About Webdyn

At Webdyn we work to manufacture the best IoT devices on the market, but our team's mission is to solve the challenges of our customers' projects.

Our accessories complete our products so you don't lack anything to start implementing them in your project.

**YOUR NEEDS,
OUR STRENGTHS**

Sensors

Sens'RF LoRaWAN

Gather local data and send it to your server via RF.

- **Protocol:** LoRaWAN 1.0 Class A
- **Sensitivity:** up to -136dBm
- **Power:** 25mW
- **Output:** 0-10V/4-20mA
- **DC input:** +6 to +24 Vdc external or type C battery
- **Mounting:** wall, DIN rail, tabletop

REFERENCES

- Sens'RF LoRaWAN Pulse
- Sens'RF LoRaWAN THP
- Sens'RF LoRaWAN TIC



WG0307-D01

WG0307-D02

WG0307-D03

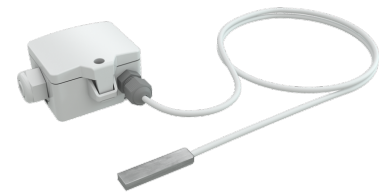
Sens' Temperature - Contact

Contact temperature sensor.

- **Output ampere:** 1x 4..20 mA, max. load 500 Ω
- **Power supply:** 15..24V
- **Output signal range temperature:** 0 to +50°C
- **Protection:** IP65 according to EN 60529
- **Cable entry:** Flextherm M16, for wire $\varnothing=3.7$ mm
- **Ambient condition:** max. 85% rH

REFERENCES

- Contact Temperature Sensor



AC1102-01

Sensors

Sens' Temperature - Outdoor

Outdoor temperature sensor.

- **Output ampere:** 1x 4..20 mA, max. load 500 Ω
- **Power supply:** 15..24V, 0,5 Watts under 24V
- **Output signal range temperature:** -50 to +50°C
- **Protection:** IP65 according to EN 60529
- **Cable entry:** Flextherm M16, for wire $\varnothing=3.7$ mm
- **Ambient condition:** max. 85% rH



REFERENCES

- Outdoor Temperature Sensor

AC1101-01

Sens' Temperature - Outdoor Modbus

Modbus slave outdoor temperature sensor.

- **Network technology:** RS485 Modbus RTU, half-duplex, baud rate 9600, 19200, 38400, 57600, parity: none, even, odd
- **Power supply:** 15..35V
- **Output signal range temperature:** -20 to +80°C
- **Protection:** IP65 according to EN 60529
- **Cable entry:** M25, for wire max. $\varnothing=7$ mm
- **Ambient condition:** max. 85% rH



REFERENCES

- Outdoor Temperature Sensor Modbus Slave

AC1101-02

Sensors

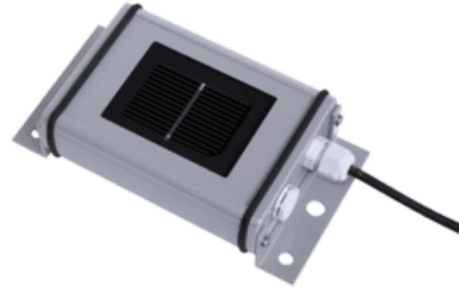
Sens' Irradiation

Irradiation and temperature sensor.

- **Irradiance measurement:** up to 1500 W/m²
- **Cell temperature measurement:** -40 to +90°C
- **Voltage supply:** 12 to 24 VDC
- **Protocol:** Modbus RTU
- **Interface:** RS485 up to 38.4 kBaud
- **Galvanic isolation:** 1.000 V (power supply & bus)

REFERENCES

- Irradiance & Temperature Sensor



AC1001-01

Antennas

Sens'Antenna

Wall mounted external antenna.

- **Frequency:** 698/960/1710/2170/2500/2700 MHz
- **Impedance:** 50 Ohm
- **Certificate:** IP67
- **Connector:** SMA M
- **Temperature:** -40 to +85 °C
- **Power:** max. 25 Watts

REFERENCES

- Antenna GSM5+LTE700/2600 SMA M -IP67- RG58 - 5m cable
- Antenna GSM5+LTE700/2600 SMA M -IP67- RG58 - 10m cable
- Antenna GSM5+LTE700/2600 SMA M -IP67- RG58 - 20m cable



AC0201-11

AC0201-13

AC0201-12

Antenna STUBBY GSM5+LTE700/2700

- **Frequency:** 700/800/900/1800/1900/2100/2600 MHz
- **Connector:** SMA M, SMA M R/A
- **Gain:** 1.5 dBi
- **Dimensions:** 53x7 mm

REFERENCES

- MTX-Antenna STUBBY GSM5+LTE700/2700 SMA M R/A



000118009286

Power Supplies & DIN Rail

Sens'Power Supply

24V DC Power supply.

- **Output voltage & current range:** 24V; 0~0.63A
- **Rated range & power:** 0.63A; 15.2W
- **Input AC voltage:** 85 to 264 VAC
- **Frequency range:** 47 to 63 Hz
- **Working temperature:** -30~+70°C
- **No load power consumption:** <0.3W
- **Load burn-in test:** 100% full



REFERENCES

- 24V DC Power Supply

AC0103-00-DR15

MTX ACC AC Power Adapter - Tinned Wires AWG22

- **Input:** 100-240 Vca/50-60 Hz
- **Output voltage:** 12 Vcc
- **Output current:** 1.0 A
- **Power:** 12 W
- **Cable/Connector:** 1.8 m AWG22 cable/Tinned wires



REFERENCES

- MTX ACC AC Power Adapter EU - Tinned Wires AWG22
- MTX ACC AC Power Adapter US/JAP - Tinned Wires AWG22

000901006300

000901006023

Power Supplies & DIN Rail

DG-60-S24 DIN RAIL 60W, 24V power Supply

- **Input:** 90Vac~264Vac, 127VDC-370VDC
(input V+ connect L, input V- connect N)
- **Output voltage:** 24~28V
- **Output current:** 0~2.5 A
- **DC output:** 24V



REFERENCES

- DG-60-S24 DIN RAIL 60W, 24V

901002062

MTX ACC AC Power Supply Universal – Mounted on DIN

- **Input:** 100-240 Vca/50-60 Hz
- **Output voltage:** 12 Vcc
- **Output current:** 1 A
- **Power:** 12 W



REFERENCES

- MTX ACC AC Power Supply – DIN – MTX-12-1 Universal Input

000901006024

Extension cables USB/TIC

Extension USB/TIC- Modulated version for the WebdynSunPM

REFERENCES

- Extension USB/TIC- Modulated version

AC1601-01



Extension USB/TIC - PME-PMI version for the WebdynSunPM

REFERENCES

- Extension USB/TIC - PME-PMI version

AC1601-02



Cable DB9 M to RJ45 M

REFERENCES

- Cable DB9 M to RJ45 M - 1.5m (Cnt- RS232/RS485)

230001103



SPAIN | FRANCE | INDIA | PORTUGAL | TAIWAN

www.webdyn.com | contact@webdyn.com