

Product Catalogue

Vertical Solutions | Modems | Routers | Software



Contents

Page 5	Smart Grid & Photovoltaic Stay connected to your field data
Page 6	Smart Cities The best way to connect your city services
Page 7	Smart Metering IoT solutions for metering
Page 9	Smart Building & Home Make life easier by connecting your buildings
Page 11	Smart Industry 4.0 Revolutionize your industrial production
Page 13	Modems & Routers Multipurpose devices
Page 15	Software Our powerful softwares included in compatible devices
Page 18	Who & Where

Why Webdyn

At Webdyn we work to manufacture the best IoT devices on the market. Our product portfolio is designed to help our customers access opportunities within the rapidly growing IoT and industrial IoT environment. We design modems, gateways, routers and IoT software solutions. From automation, metering or photovoltaic, to public transportation connectivity – hundreds of thousands of our networking devices are currently at the heart of our customers' IoT solutions.



Smart Grid & Photovoltaic

Managing power production and consumption thanks to the use of wireless communications in solar installations.



Smart Cities

Connected sensors, vehicles, and devices require secure and reliable IoT connectivity products.



Smart Metering

Real-time information on power consumption for a more sustainable world.



Smart Building & Home

Smart building management thanks to a smart network of wireless devices and cloud management systems.



Smart Industry

Global adoption of automation demands the ability to monitor and manage equipment remotely to increase productivity.



Smart Transportation

Communication devices with certificates for transportation, to achieve a more intelligent transportation network.

Smart Grid & Photovoltaic

Stay connected to your field data



WebdynSun

Gateway for solar plants that monitors and collects data from solar plants in a single device.

- RS485/232
- TIC meter
- Pulse inputs
- Analog inputs
- Digital I/O
- Ethernet
- DIN rail
- Plug & Play
- Remote configuration
- Alarms



WebdynSunPM

Gateway for solar plants with Power Management that collects and analyzes data, and manages photovoltaic installations.

- RS485
- 0-10V / 4-20mA
- Pulse inputs
- Relay
- Ethernet
- DIN rail
- User programmable
- Compatible with most platforms
- Secure MQTT, MQTTS, FTP/SFTP
- Plug & Play
- Remote configuration
- PM: zero injection capability

*According to integrated brands

Smart Cities

The best way to connect your city services



WebdynEasy LoRaWAN

The WebdynEasy LoRaWAN platform is specific to wireless networks using LoRa radio technology.

- 4G/3G
- LoRaWAN
- RS485/422
- Ethernet
- Open VPN
- Webservices
- Plug & Play
- Remote configuration
- Modbus RTU and TCP
- FTP/S, HTTP/S connection



ExpertLoRaWAN

The ExpertLoRaWAN is a LoRaWAN gateway embedding a LoRaWAN network server to locally constitute a complete private network.

- LoRaWAN freq. EU868
- 4G/3G/2G
- Ethernet
- RS485
- DIN Rail
- Digital input
- USB host
- USB OTG

Smart Metering

IoT solutions for metering



MTX-StarEnergy-M

The MTX-StarEnergy-M is an innovative industrial modem with a set of features specially oriented for the electric market.

- 4G/3G/2G
- USB 2.0
- RS232/422/485
- 230V
- DIN rail
- Webserver
- Serial gateway
- SNMPv3
- TACACS+
- Watchdog
- CSD



MTX-StarEnergy-E

Innovative industrial modem that comprises a set of features specially oriented to the electric market.

- 4G/3G/2G
- USB 2.0
- RS232/422/485
- AC&DC powered
- DIN rail, wall mount
- CSD
- Webserver
- Serial gateway
- SNMPv3
- TACACS+
- Firewall
- Watchdog



MTX-IoT-XS

Modem programmable 4G/3G/2G

- 4G/3G/2G
- RS232/485
- USB 2.0
- DynDNS No-IP
- MQTT/s
- 1x digital output
- 1x digital input



WebdynPulse

The WebdynPulse gateway is used to share all the data from three meters with a pulse output in a single box.

- 2G
- Ethernet
- 3 pulse inputs
- DIN rail
- Plug & Play
- Remote configuration

● Highlights

Plan and control electricity, gas and water consumption.

Monitor energy consumption in real time to apply consumption good practices. This optimization allows them to make significant energy savings.

Energy efficiency economic model, sharing of savings with customers.

Multi-fluid meters: remote reading of water, electricity, and gas meters...

Smart Building & Home

Make life easier by connecting your buildings



WebdynEasy W M-Bus

The WebdynEasy W M-Bus 868MHz or 434MHz hub is designed for wireless networks using wireless M-Bus radio technology.

- LTE-M/NB-IoT, 2G
- Wireless M-Bus
- BLE (optional)
- Battery
- Wallmount
- DIN rail (optional)
- IP67
- Plug & Play
- Remote configuration
- FTP/S connection
- Data encryption



WebdynEasy LoRaWAN

The WebdynEasy LoRaWAN platform is specific to wireless networks using LoRa radio technology.

- 4G/3G
- LoRaWAN
- RS485/422
- Ethernet
- Open VPN
- Webservices
- Plug & Play
- Remote configuration
- Modbus RTU and TCP
- FTP/S, HTTP/S connection

Webdyn EasyTunnel

EasyTunnel is an innovative and powerful all-in-one solution.

- 4G/3G/2G
- 1x Digital input
- 1x Digital output
- RS485/RS232
- Ethernet configuration
- 7V to 30V
- DynDNS No-IP
- SMS control
- DualSIM
- Serial Gateway
- Datalogger
- Webserver
- MQTT(s)
- FTP(s)
- Modbus RTU/TCP
- TITAN V6 software



MTX-Router-Q

An innovative LTE cat.4/4G entry level industrial IoT router with Gigabit Ethernet, and 3G/2G fallback.

- 4G/3G/2G
- GigaEthernet
- AC power supply
- LiPo battery
- DIN rail
- Webserver
- SMS control
- Email
- VPN: IPSEC, OpenVPN



ExpertLoRaWAN

The ExpertLoRaWAN is a LoRaWAN gateway embedding a LoRaWAN network server to locally build up a complete private network.

- LoRaWAN freq. EU868
- 4G/3G/2G
- Ethernet
- RS485
- LoRaWAN to LTE tunnel
- Modbus
- DynDNS No-IP
- MTX-Titan Software
- Digital input
- USB host
- USB OTG
- DIN rail
- MQTT
- LoRaWAN V1.0.2
- Embedded server LoRaWAN
- Webserver



WebdynModbus

The WebdynModbus gateway is used to monitor and collect data from Modbus equipment (slaves).

- 4G/3G
- Ethernet
- RS485
- DIN rail
- Plug & Play
- Remote configuration
- Modbus TCP and RTU



● Highlights

Specifically designed for [building and home management](#).

Control energy efficiency, temperature control, security, maintenance, etc.

Also ideal for [industrial equipment](#) and products: PLCs, machines, boilers, air conditioning, etc.

[Remote control in real time](#) through mobile devices, computers, etc., and monitor your data with our IoT platform.

Smart Industry 4.0

Revolutionize your industrial production



Webdyn EasyTunnel

EasyTunnel is an innovative and powerful all-in-one solution.

- 4G/3G/2G
- DualSIM
- 1x Digital input
- Serial Gateway
- 1x Digital output
- Datalogger
- RS485 RS232
- Webserver
- Ethernet configuration
- MQTT(s)
- 7 to 30V
- FTP(s)
- DynDNS No-IP
- Modbus RTU/TCP
- SMS control
- TITAN V6 software



MTX-Router-Titan II-S

LTE/4G/3G/2G industrial IoT router that provides an easy integration and a variety of powerful interfaces.

- 4G/3G/2G
- Ethernet
- RS232, RS485
- WiFi
- 2x digital inputs
- USB
- DIN rail
- Webserver
- Modbus
- Datalogger
- HTTP/S, MQTT/S, FTP/S
- VPN: IPSEC, OpenVPN



MTX-Router-EOS

Entry level compact IoT device developed for industrial applications, with LTE/4G, dual SIM and 3x Ethernet.

- 4G/3G/2G
- Dual SIM
- WiFi
- 3x Ethernet
- RS232, RS485
- DIN rail
- Modbus
- DHCP
- Firewall
- Serial tunnelling
- MQTT
- VPN



MTX-IoT-S

Innovative and powerful all-in-one solution for the IoT sector, with LTE/4G connectivity, 8x digital I/O, 2x ADC, ULP and battery.

- 4G/3G/2G
- RS232, RS485
- 8x digital I/Os
- 2x ADC, 4x DAC
- Latch relay
- Ultra Low Power
- GPS
- GPIO management
- Relay management
- MQTT/s
- Modbus
- Datalogger

● Highlights

Ideal for a wide range of **industrial equipment** and different products: PLCs, machines, boilers, air conditioning, etc.

Improvement of **city management**: development of personalized products as needed.

Connect machines, tools, sensors, and other equipment on the floor to give process engineers and managers more **visibility** of the production.

Modems & Routers



MTX-IoT-XS

programmable modem. 4G/3G/2G

- 4G/3G/2G
- RS232/485
- USB 2.0
- DynDNS No-IP
- MQTT/s
- 1x digital input
- 1x digital output

SMART CITIES METERING INDUSTRY



MTX-IoT-S

LTE/4G programmable modem.

- 4G/3G
- RS232/485
- 8x digital I/O
- 2x ADC, 4xDAC
- Dual SIM
- Latch relay
- Ultra Low Power
- GPS

SMART CITIES METERING INDUSTRY
TRANSPORTATION BMS



MTX-Router-Titan II-S

LTE/4G/3G industrial IoT router.

- 4G/3G/2G
- Ethernet
- RS232/485
- WiFi
- Digital input
- USB 2.0
- DIN rail
- Titan software

SMART CITIES METERING INDUSTRY TRANSPORTATION



MTX-StarRoad II

IoT router for automotive with ITxPT.

- LTE /4G
- 2x RS232/485
- 8x DI, 4x DO
- 2x CAN
- 1x Ethernet
- 1x HDMI
- GPS
- ITxPT compliant

TRANSPORTATION



MTX-Router-Q

LTE cat.4/4G entry level router.

- 4G/3G/2G
- Giga Ethernet
- AC power
- LiPo battery
- DIN rail
- Webserver
- SMS control
- Email

SMART CITIES INDUSTRY BMS

Software

MTX-Titan

Included in all MTX-Router-Titan devices, the configuration can be intuitively done from any computer.

Serial gateways:

- 3 simultaneous gateways
- Modes: TCP server/TCP client

Modbus:

- Modbus TCP/Modbus RTU gateway
- Modbus slave RTU/TCP

Datalogger:

- Data from sensors (temperature, distance...)
- Serial data collected by RS232, RS485 or USB
- GPS data for tracking applications

SMS:

- Full control by SMS with phone authorizations
- Alarms (digital input, temp., M-Bus data read)

Sensor compatible:

- Modbus RTU/TCP sensors
- RF868 LPWAN sensors

VPN:

- IPSEC + OpenVPN with client/server mode (25 clients)

Other:

- Compatible with DynDNS/No-IP & private DNS
- Time synchronization (NTP) with timezones
- Full management with AT command
- NAT, firewall, DHCP, etc. and other features

TITAN V6

Included in the EasyTunnel device. The configuration can be done from any computer

Serial gateways:

- 2 simultaneous 2G/3G/4G<->RS232/485
- Modes: TCP server, TCP client, UDP, MQTT
- SSL/TLS supported

Modbus:

- Modbus TCP/Modbus RTU master concentrator and Modbus slave RTU/TCP

Datalogger:

- Serial data collected by RS232 or RS485 (Modbus, sensors, meters, I/Os...)
- Automatic data sending (HTTPs/FTP/s/MQTTs) with custom JSON
- FIFO/LIFO modes
- Pulse counter

SMS:

- Full control by SMS with phone authorizations
- Alarms (digital input, temp., M-Bus data read)
- Send/receive SMS by Modbus TCP (for PLC)

Other:

- Run user-programable scripts, based on JAVASCRIPT
- Configuration by web browser, MQTT, SMS, Modbus and other
- Full management with AT Command by serial, socket, SMS, modbus, SNMP, ...
- SSH encryption enabled, supports TACACS+
- Compatible with DynDNS/No-IP & private DNS
- Programmable autoreset (schedule, timer...)
- Time synchronization (NTP) with timezones
- Over The Air firmware upgrade (OTAP)
- Clear and understandable application notes with examples (modbus, datalogger, SMS, metering...)
- Protocol IEC 60870-5-102 for meter reading supported
- Syslog: send to a remote server

MTX-Tunnel

Included in all compatible modems, it turns them into powerful LTE/4G/3G/GPRS series gateways.

Connectivity:

- 4G/3G/2G serial gateways: TCP client, TCP server, UDP client/server, accept incoming CSD calls, up to 2 simultaneous tunnel
- IP connectivity mode: permanent 100% time, under request (SMS, missed call), change on a digital input, analog input out of level, serial data on RS232/RS485 port, scheduled date/hour/time

TCP services:

- Web server, Telnet, SNMP, TACACS+, NTP
- Datalogger: MQTT, MQTTs, HTTP, HTTPs, FTP
- Shows the status of digital and analog inputs
- Change digital output level and relays
- Execute AT commands remotely: Telnet, MQTT/MQTTS, SMS, HTTP

Security:

- Authorized phone numbers
- Firewall IP, SSL/TLS connections, encrypted configuration
- Secure OTAP (remote FW upgrade)
- Watchdog hardware

Alarms:

- Send SMS/MQTT alarm when the level of digital or analog input change
- SMS can be sent to up to 10 remote users
- Execute remote AT commands
- Change the status of digital outputs & relays
- Customizable SMS commands

Metering, modbus, sensors:

- 868 MHz remote monitoring sensors (LPWAN)
- Master for Modbus RTU devices, Modbus TCP slave, Modbus TCP to RTU gateway
- Relays control
- Access to serial devices using 4G/3G/2G and GSM
- Astronomical clock

Solutions for dynamic IP:

- IP session using a SMS or missed call
- DynDNS and NoIP
- Private DNS

Highlights

The [MTX-Titan software](#) can connect locally via Ethernet or WiFi, or remotely via 4G/3G/2G. It can also connect via SMS, Modbus RTU, Modbus TCP and SNMP.

The [MTX-Tunnel software](#) provides remote connectivity to devices that only have an RS232 or RS485 serial port, so they become smart devices, and are able to send sensor data (temperature, humidity, pulse counters...) to the cloud.

Sensors



Sens'RF LoRaWAN

To measure and send local data.

- Sensitivity -136dBm
- 10 years autonomy
- Long radio range
- Resistance to noise



Sens' Temperature

Contact temperature sensor.

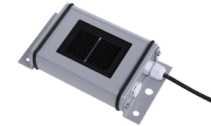
- 1x 4..20 mA, max. load 500 Ω
- Power supply 15..24V
- 0 to +50°C
- Protection IP65



Sens' Temperature Outdoor

Outdoor temperature sensor

- RS485 Modbus RTU
- Alimentation 15..35V
- -20 to +80°C
- Protection IP65



Sens'Irradiation

Solar irradiation and temperature sensor

- Irradiation measurement up to 1500 W/m²
- Panel temp. from -40 to +90°C
- Modbus RTU
- Alimentation 12..24V

Accessories

At Webdyn we offer a wide range of accessories for our devices with LTE/4G/3G/GPRS connectivity, GPS/GNSS, WiFi, Bluetooth, etc.

- **POWER SUPPLIES:** all kinds of power supplies and Li-Po batteries for industrial equipment.
- **ANTENNAS:** LTE/4G, 3G, 2G, WiFi, and GPS antennas in several formats and different types of cables, lengths and connectors.
- **RF and DATA CABLES:** coaxial and data cables with different types of connectors.
- **CONNECTOR ADAPTERS:** RF and data connectors adapters (SMA-FME, DB15-terminal block, DB15-DB9...).
- **DIN RAIL ACCESSORIES:** accessories for the assembly of DIN rail with Webdyn devices.



Who & Where

R&D Offices

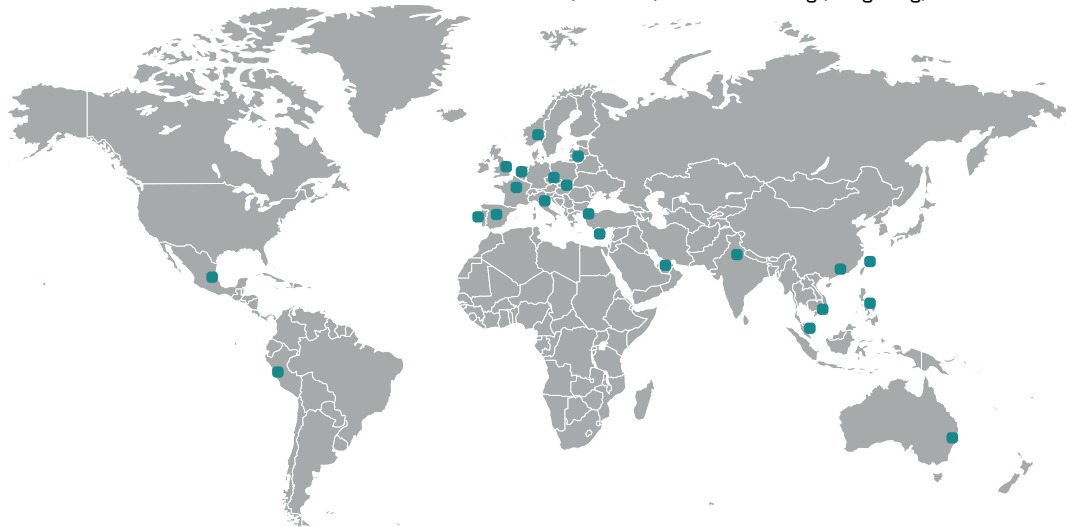
- Madrid (Spain)
- Paris (France)
- Barcelona (Spain)
- Seville (Spain)

Commercial Offices

- Delhi (India)
- Lisbon (Portugal)
- Dubai (UAE)
- Lima (Peru)
- Taipei (Taiwan)

Distributors

- Syscom-ProREP (France)
- Tyrrell (UK)
- Maritex (Poland)
- Alcom (Benelux)
- Elteco (Norway)
- DeltaM2M (Denmark)
- Melchioni (Italy)
- Sigint Solutions (Cyprus)
- FCC PS (Czech Rep.)
- Gamaxnet (Hungary)
- Infopulsas (Lithuania)
- Scatek (Turkey)
- Macnica Galaxy (Taiwan)
- Liseng (Hong Kong)
- FutureFirst (Singapore)
- Oritech (Vietnam)
- RSPOT (Philippines)
- Australis M2M (Australia)
- Amplicon (EAU)
- AresM2M (Peru)
- Enertronics (Mexico)





SPAIN | FRANCE | INDIA | PORTUGAL | APAC

www.webdyn.com | contact@webdyn.com