

# End-of-Life Product Notice

---

## WebdynEasy W M-Bus

References:

WG0612-A02 : WebdynEasy W M-Bus 868MHz

WG0612-A03 : WebdynEasy W M-Bus 434MHz



# Remarks on this notice

This document is intended for use by facilities that recycle or process end-of-life materials. It provides fundamental instructions for disassembling Webdyn products in accordance with the European Directive 2012/19/EU on Waste Electrical and Electronic Equipment (WEEE), to remove parts and materials that require special treatment. This guide gives essential details to ensure that the materials and components of the product receive appropriate care at the end of their life.

## **SAFETY ADVICE**

All components must be removed in accordance with all applicable electrical and safety regulations. Disassembly should only be performed by qualified personnel. Webdyn advises dismantlers to wear protective goggles as parts may become detached during disassembly, especially in the case of broken or welded parts. If applicable, disconnect all power supplies from the components before gently opening the casing. Once the casing is opened, please recycle both parts of the casing and all other parts in accordance with the regulations in your region.

## **Remarks**

Lifespan of Webdyn products: between 5 to 10 years (depending on usage and the number of frames sent per day).

## **Product Disassembly Process**

- Disconnect the product's electrical connection.
- Carefully open the casing by removing the 4 screws located at the back of the product.
- Carefully remove the PCB by unscrewing it from the back casing (4 screws).
- Carefully remove the battery from the PCB, ensuring to wear protective goggles and gloves for safety.
- Once the front casing, back casing, and the board are separated, please recycle the casings and all other components in accordance with local legal requirements.

The products comply with European directives according to the EU declaration of conformity available from Webdyn.

### Recycling:



The transposed European directives on waste batteries and electrical and electronic equipment (WEEE) outline the necessary actions to limit the negative impact of the product's end of life.

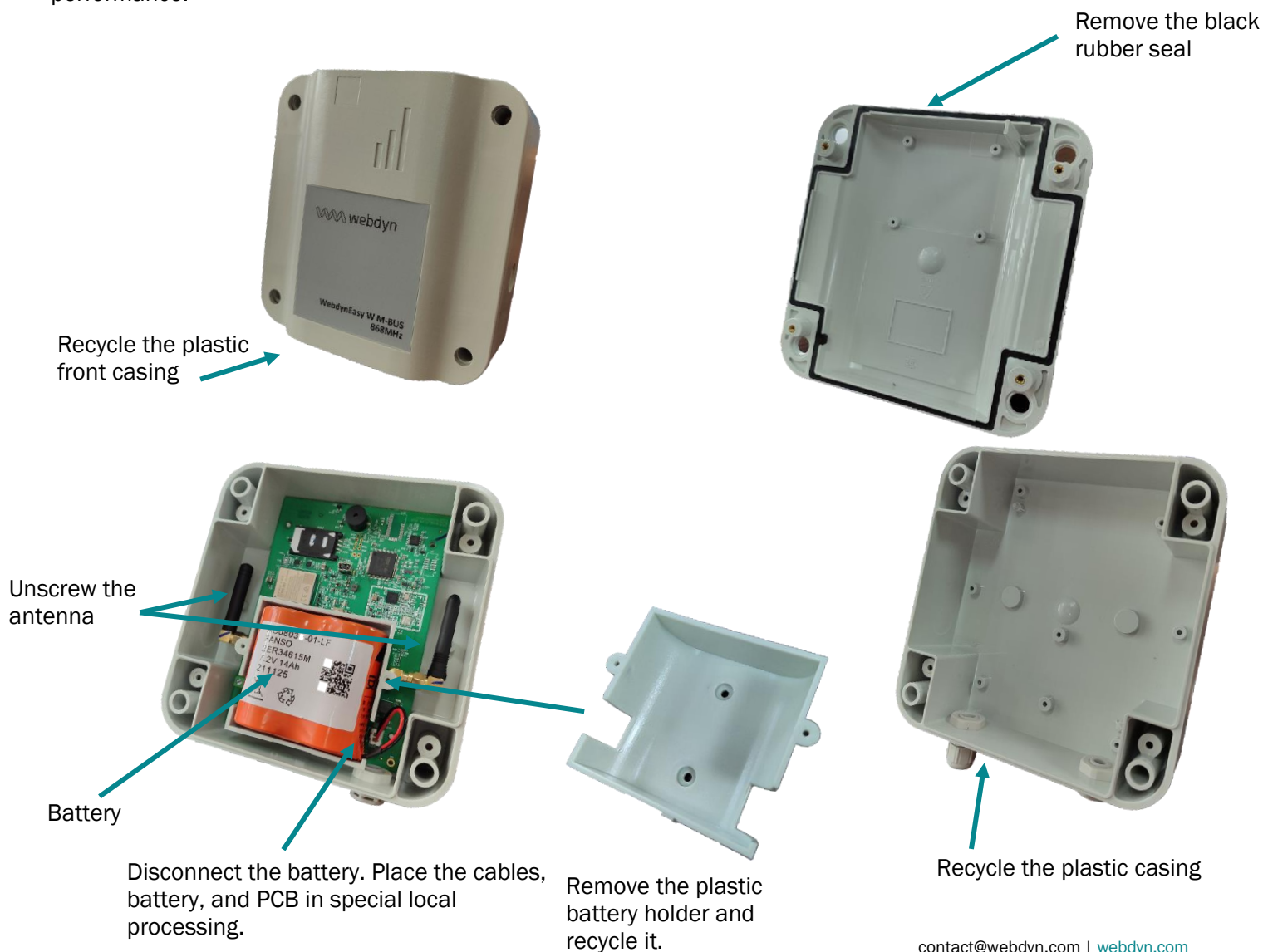


This symbol is present on the front and back casing, allowing recycling in the standard recycling bin.

These products are subject to separate collection. Use an authorized battery collection and treatment center or contact Webdyn.

## WebdynEasy W M-Bus

The following lists, identifies, and places the parts of the WebdynEasy W M-Bus product that enhance recycling performance:



## Summary

Part Details	Where to recycle
Gray plastic front casing	Recycling bin (usually yellow)
Black plastic rear casing	Recycling bin (usually yellow)
GSM antenna	Waste collection center or special local processing
Wireless M-Bus antenna	Waste collection center or special local processing
Screws	Waste collection center or special local processing
PCB	Waste collection center or special local processing
Battery Support	Recycling bin (usually yellow)
Cables & Battery Pack	Waste collection center or special local processing
Black rubber seal	Waste collection center or special local processing